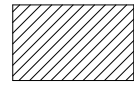


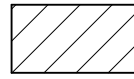
| Keynote Legend | |
|----------------|---|
| Component s | Material Description |
| 311.004 | Balcony Door Wood/Aluminium 998x2100 mm |
| 312.003 | Window Wood/Aluminium 1212x1212 mm |
| 312.005 | Window Wood/Aluminium 1212x3200 mm |
| 314.001 | Curtain Window 2892x4320mm |
| 314.002 | Curtain Window 3552x2108 mm |



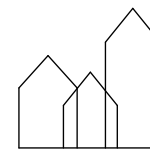
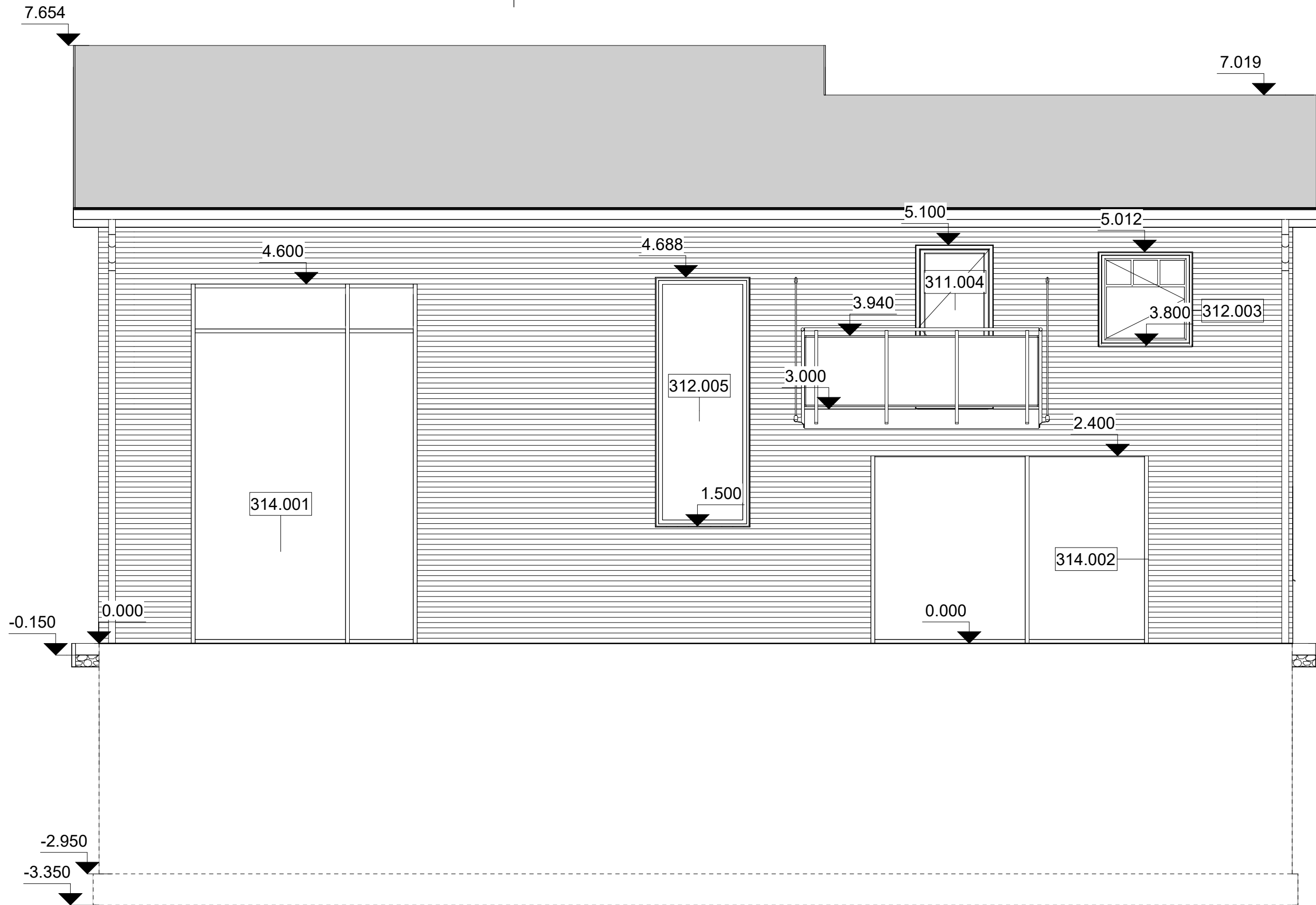
bips-Masonry



Bitumen Felt



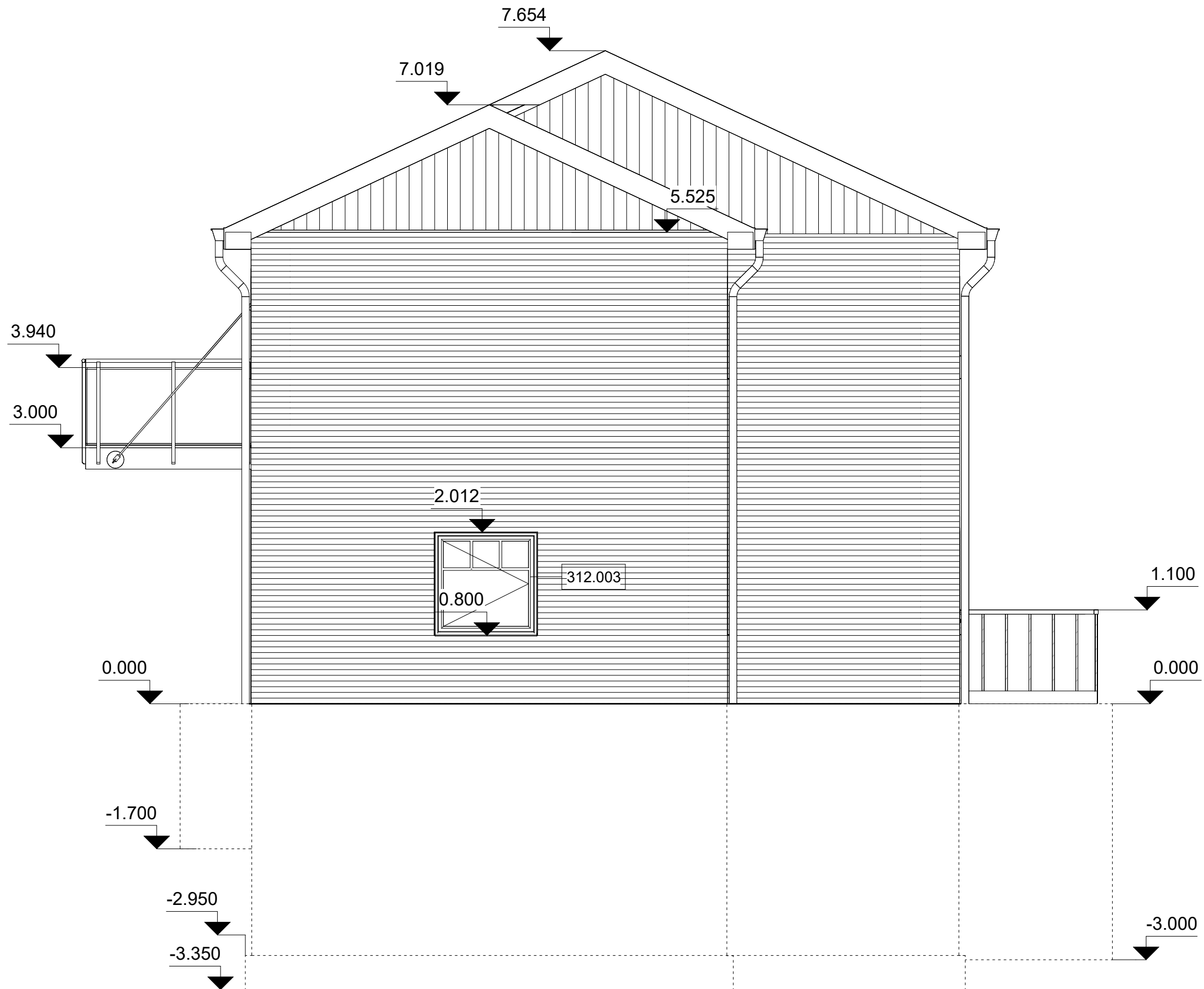
Wood Clading



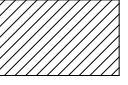
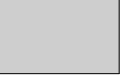
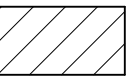
Bring ideas to life
VIA University College

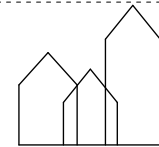
VIA Built Environment & Engineering
Campus Horsens

| | | |
|---------------------------------------|-----------------|-----------------------|
| PROJECT: 2 storey house with basement | DATE: 11/30/22 | IXX_K01_TXX_H1_EX_N16 |
| SUBJECT: East | SCALE: 1 : 50 | |
| DRAWN BY: Remigijus Petkus | CLASS: AH21-22S | |



| Keynote Legend | |
|----------------|--|
| Component s | Material Description |
| 312.003 | Window Wood/Aluminium 1212x1212 mm |

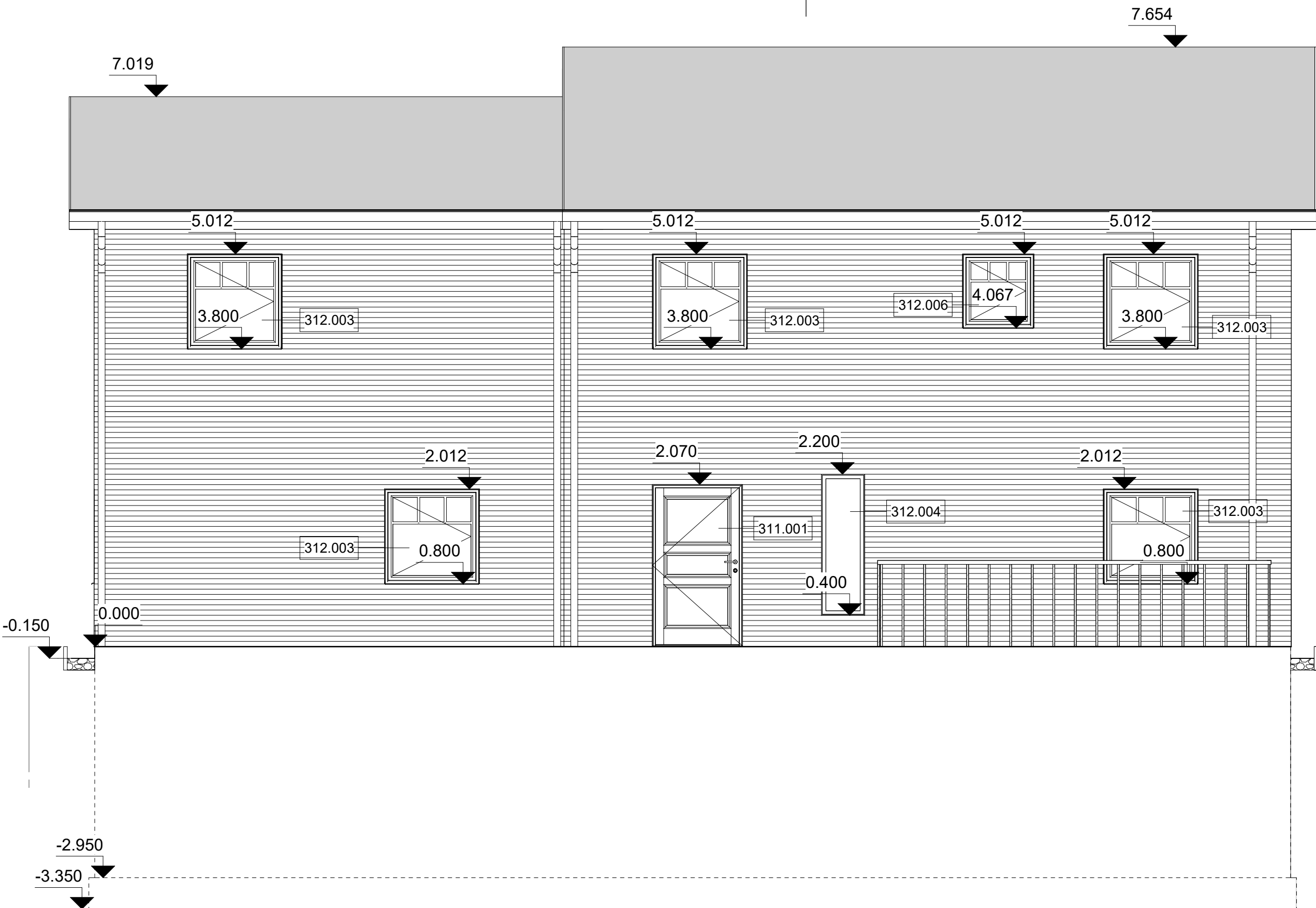
-  bips-Masonry
-  Bitumen Felt
-  Wood Cladding





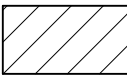
Bring ideas to life
VIA University College

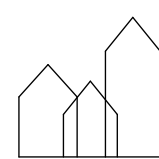
VIA Built Environment & Engineering
Campus Horsens

| | | |
|---------------------------------------|-----------------|------------------------------|
| PROJECT: 2 storey house with basement | DATE: 11/30/22 | IXX_K01_TXX_H1_EX_N18 |
| SUBJECT: South | SCALE: 1 : 50 | |
| DRAWN BY: Dimitrian Cebotaru | CLASS: AH21-22S | |



| Keynote Legend | |
|----------------|---|
| Components | Material Description |
| 311.001 | Entrance door Wood/Aluminium 1152x2145 mm |
| 312.003 | Window Wood/Aluminium 1212x1212 mm |
| 312.004 | Window Wood/Aluminium 552x1800 mm |
| 312.006 | Window Wood/Aluminium 915x945 mm |

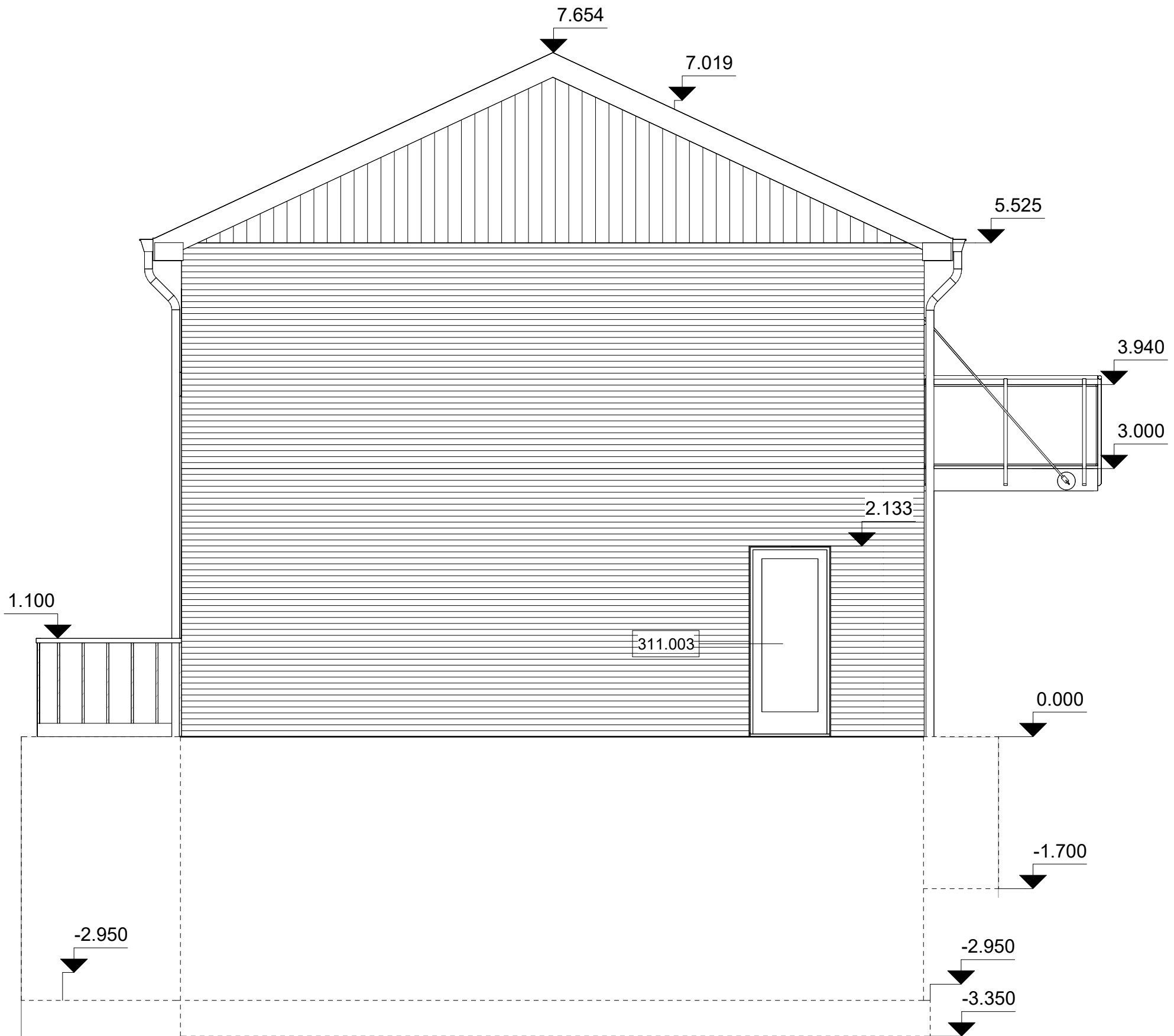
| | |
|---|--------------|
|  | bips-Masonry |
|  | Bitumen Felt |
|  | Wood Clading |



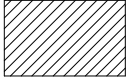


Bring ideas to life
VIA University College

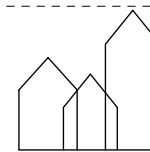
VIA Built Environment & Engineering
Campus Horsens

| | | |
|---------------------------------------|-----------------|------------------------------|
| PROJECT: 2 storey house with basement | DATE: 11/30/22 | IXX_K01_TXX_H1_EX_N19 |
| SUBJECT: West | SCALE: 1 : 50 | |
| DRAWN BY: Remigijus Petkus | CLASS: AH21-22S | |



| Keystone Legend | |
|-----------------|--|
| Component s | Material Description |
| 311.003 | Garden Door Wood/Aluminium 912x2145 mm |

-  bips-Masonry
-  Bitumen Felt
-  Wood Cladding



Bring ideas to life
VIA University College

VIA Built Environment & Engineering
Campus Horsens

| | | |
|---------------------------------------|-----------------|------------------------------|
| PROJECT: 2 storey house with basement | DATE: 11/30/22 | IXX_K01_TXX_H1_EX_N17 |
| SUBJECT: North | SCALE: 1 : 50 | |
| DRAWN BY: Dimitrian Cebotaru | CLASS: AH21-22S | |